




11 PINE DRIVE, CHARLOTTETOWN, PE C1A 6R6

1 & 2 Bedroom suites –
Designed for Convenience
and Ease

Expected to be ready by Fall 2025!



 Tel: (902) 892-8508

www.bevanenterprises.com

About Us

Bevan Enterprises offers quality apartment rentals in Charlottetown, Stratford, and Cornwall, PEI. Our full-time team ensures well-maintained properties and 24-hour emergency support. From heritage apartments with hardwood floors to modern units, we provide a range of options, including furnished downtown apartments with utilities and cable TV. We're committed to creating comfortable, worry-free living for our tenants.

About 11 Pine Drive, Charlottetown

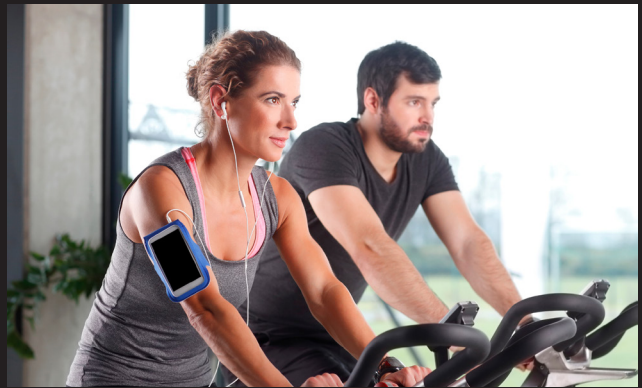
Welcome to a premium apartment residence located in the heart of Charlottetown.

Designed with senior living in mind, this premium residence offers thoughtfully crafted 1-bedroom and 2-bedroom suites, making everyday life easy and enjoyable. Each unit features a private balcony, offering a personal outdoor retreat with views of the surrounding area.

Each suite boasts spacious layouts with in-suite laundry, modern kitchens, and private balconies with views. With a focus on accessibility, 11 Pine Drive provides wide doorways, low thresholds, and senior-friendly features throughout. The building includes luxurious amenities such as a fully equipped fitness center, secure underground parking, and advanced security systems, ensuring a comfortable and secure environment for all residents.

Ideally located close to healthcare facilities, shopping, and recreation, 11 Pine Drive is perfect for seniors looking to stay connected to the community while enjoying a relaxed and worry-free lifestyle.





Tel: (902) 892-8508

www.bevanenterprises.com

BUILDING FEATURES:

Amenities:

- In-suite laundry facilities.
- Modern kitchens with updated appliances.
- Energy-efficient windows and heating/cooling systems.
- Wi-Fi and cable-ready setups.

Fitness Center:

- Equipped with a variety of machines for cardio and strength training, including treadmills, stationary bikes, and weight stations.

Community Room or Lounge Spaces:

- Community room, perfect for hosting family reunions and gatherings.
- A guest suite is available for rent, providing a convenient option for overnight visitors.

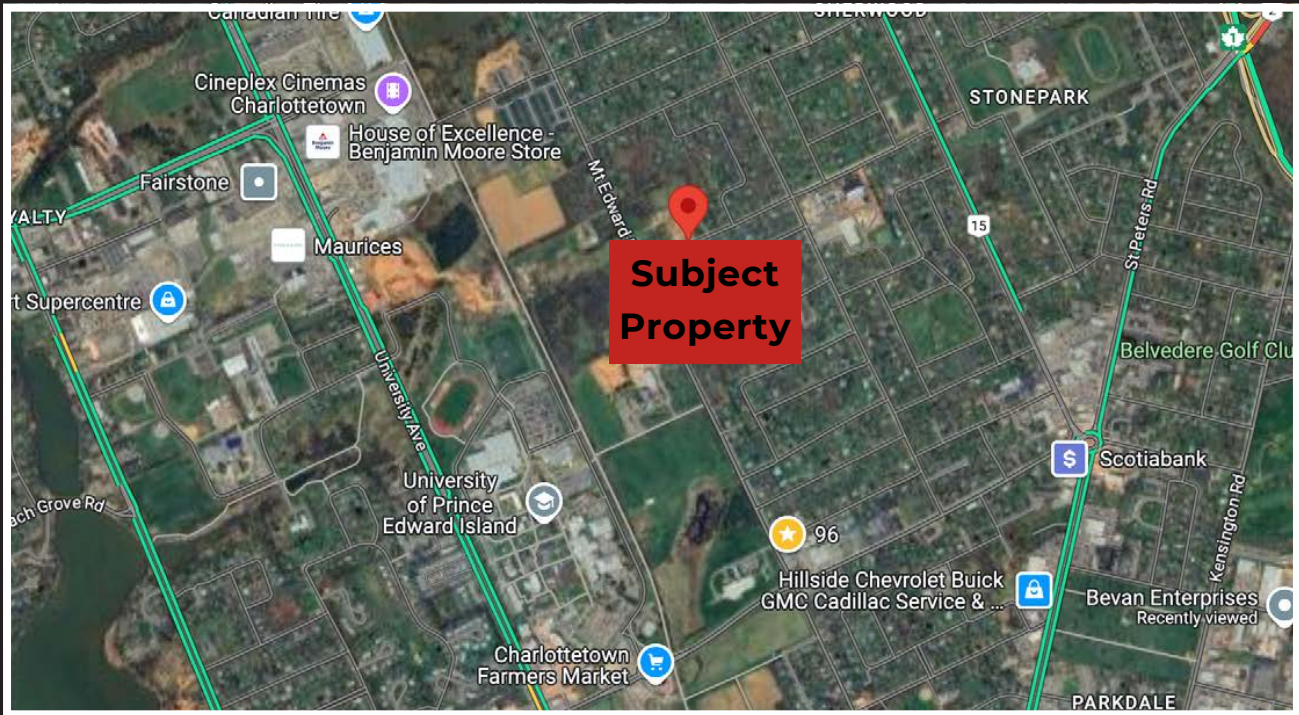
Parking and Storage:

- Underground parking is available for 2-bedroom units at \$140/month, and additional storage units are available for residents.

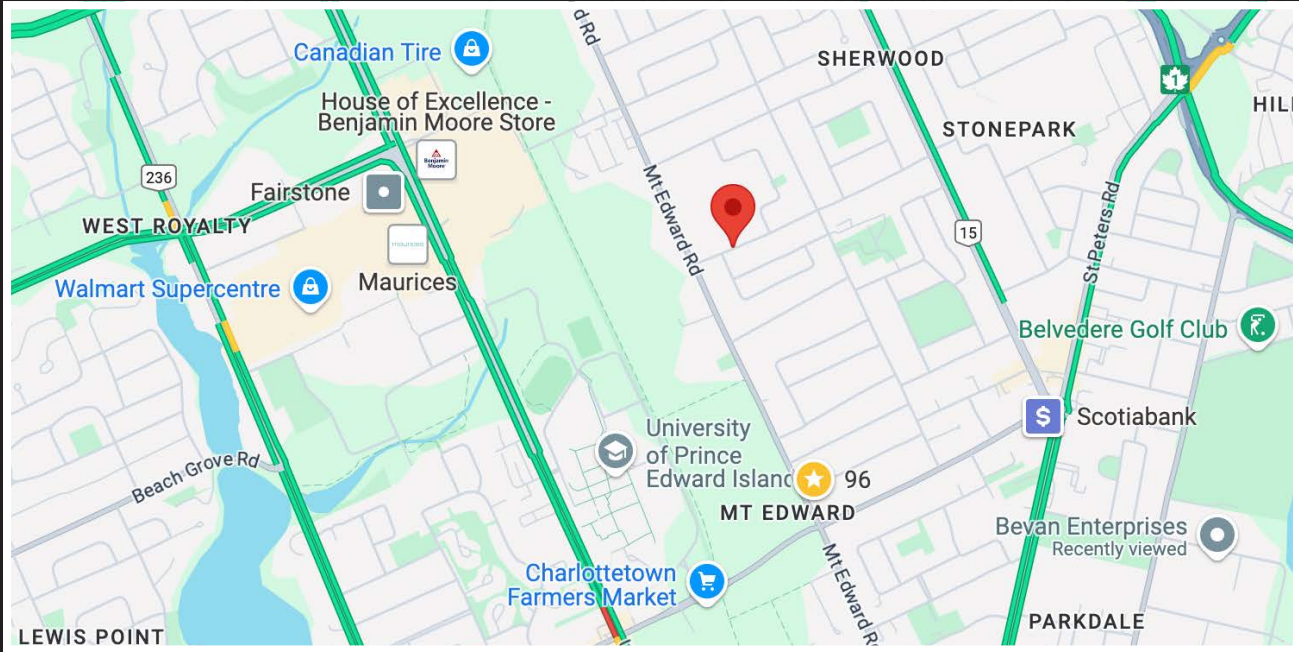
Security:

- 24/7 security cameras.
- Secure entry systems (key cards, video entry).
- Dedicated mail and package room for safe and organized deliveries.
- Fire safety and sprinkler systems.





Located in a quiet Charlottetown neighbourhood, 11 Pine Drive offers peaceful living with convenient access to shopping, healthcare, and recreational areas. Essential services are just minutes away, making an ideal place to call home.



Tel: (902) 892-8508

www.bevanenterprises.com

Plans and prices

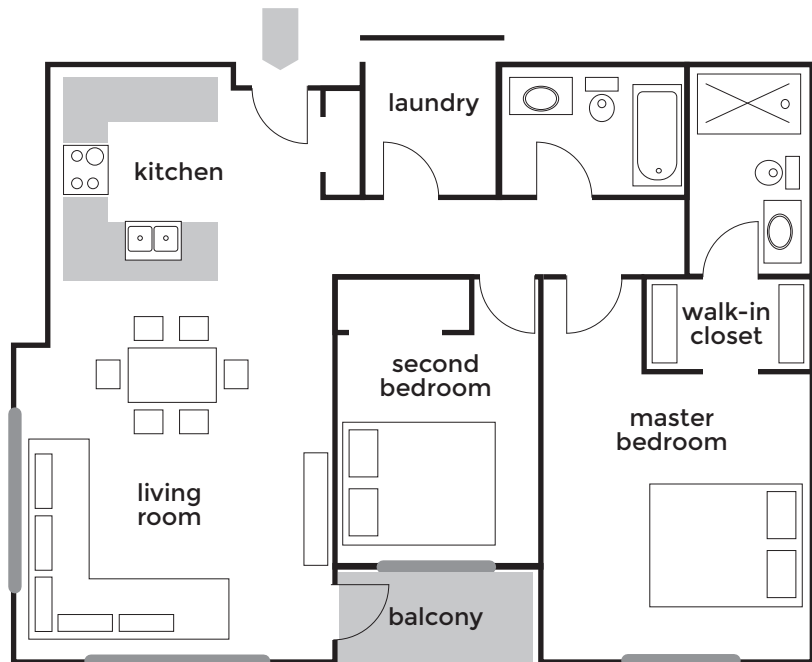
Unit type A:
1055.75 ft²

2 Bedrooms
2 Bathrooms

Monthly Rent

\$2,275⁰⁰

utilities extra



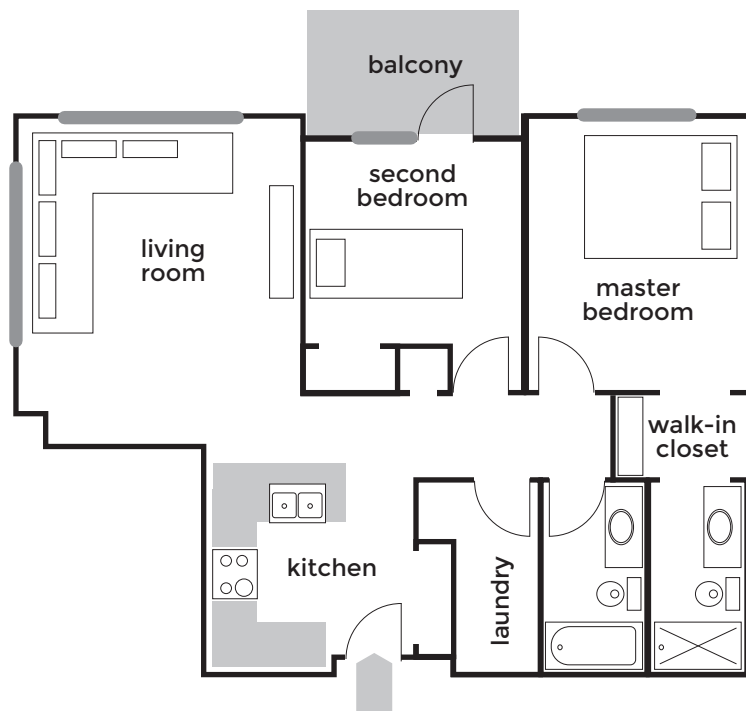
Unit type B:
1013.07 ft²

2 Bedrooms
2 Bathrooms

Monthly Rent

\$2,155⁰⁰

utilities extra



Tel: (902) 892-8508

www.bevanenterprises.com

Plans and prices

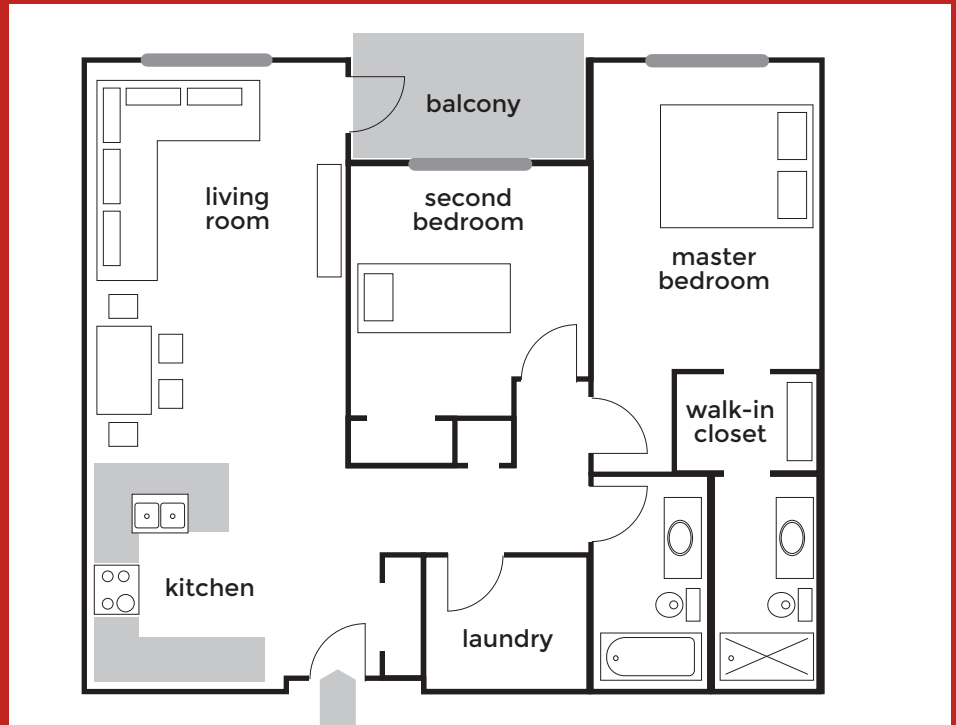
Unit type C:
937.86 ft²

2 Bedrooms
2 Bathrooms

Monthly Rent

\$2,100⁰⁰

utilities extra



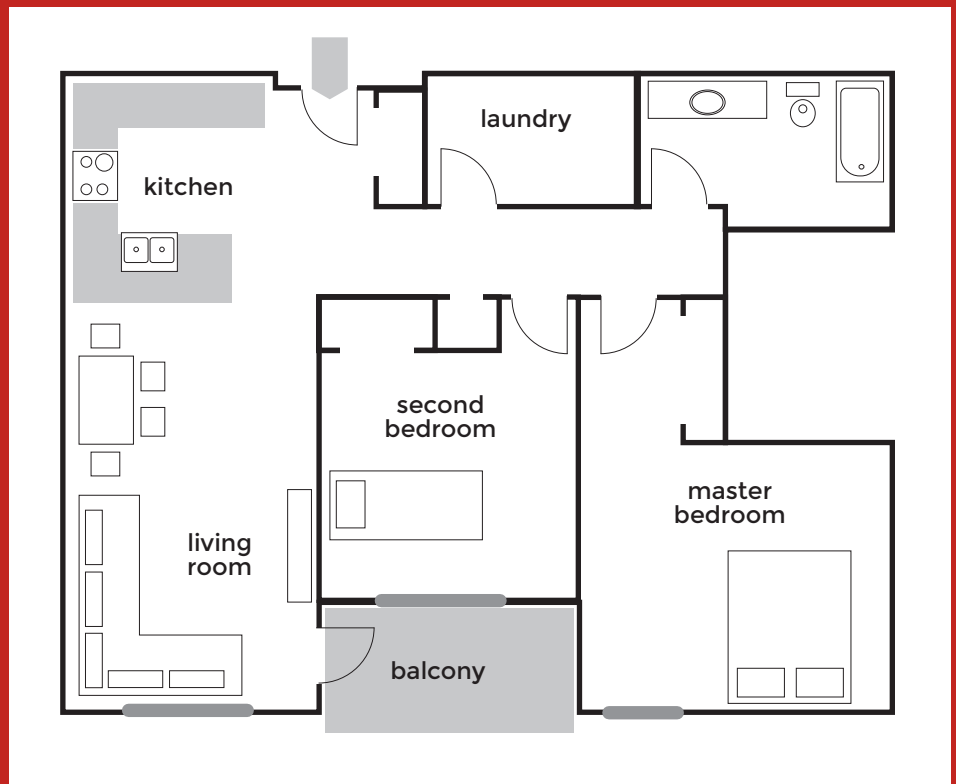
Unit type D:
968.75 ft²

2 Bedrooms
1 Bathroom

Monthly Rent

\$2,100⁰⁰

utilities extra



Tel: (902) 892-8508

www.bevanenterprises.com

Plans and prices

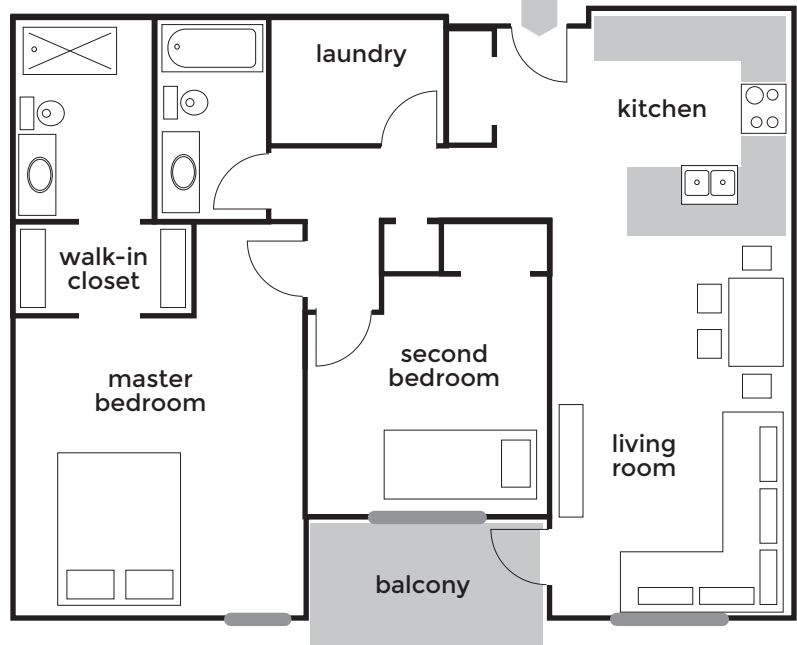
Unit type E:
1031 ft²

2 Bedrooms
2 Bathrooms

Monthly Rent

\$2,200⁰⁰

utilities extra



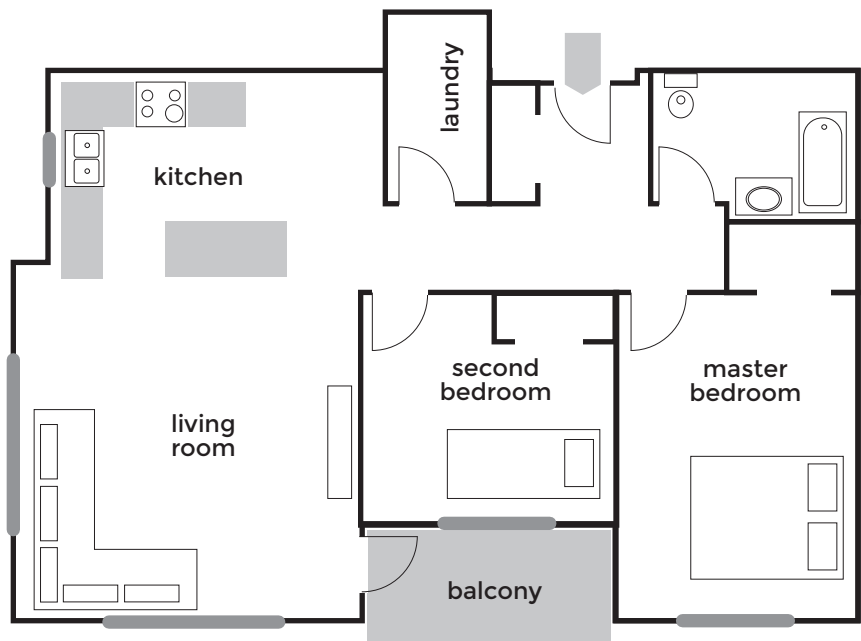
Unit type F:
1222.72 ft²

2 Bedrooms
1 Bathroom

Monthly Rent

\$2,400⁰⁰

utilities extra



Tel: (902) 892-8508

www.bevanenterprises.com

Plans and prices

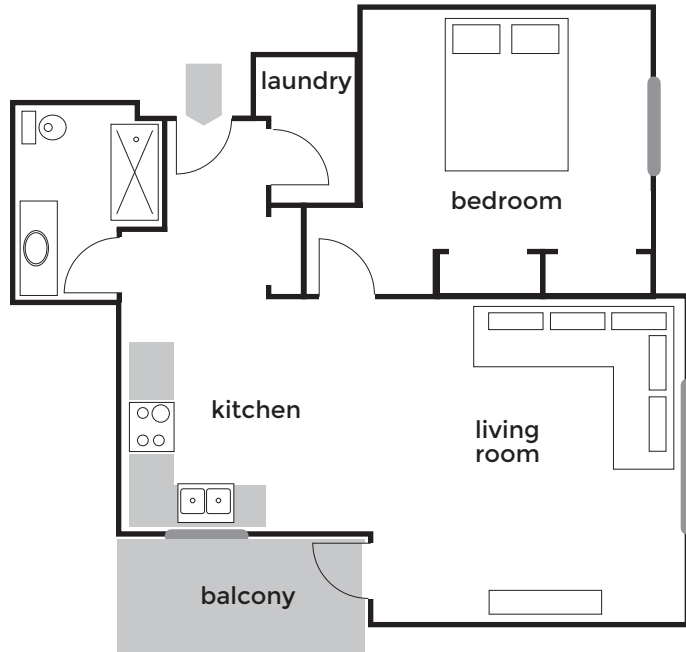
Unit type G:
1083.30 ft²

1 Bedroom
1 Bathroom

Monthly Rent

\$2,155⁰⁰

utilities extra



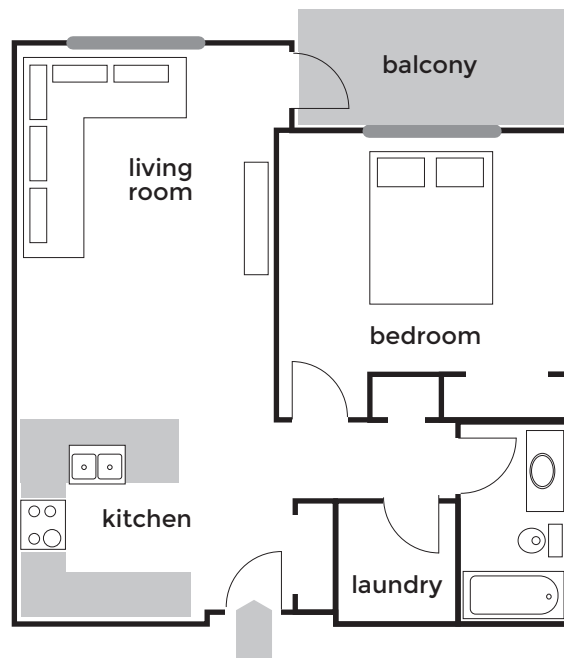
Unit type H:
667.13 ft²

1 Bedroom
1 Bathroom

Monthly Rent

\$1,500⁰⁰

utilities extra



Tel: (902) 892-8508

www.bevanenterprises.com

Plans and prices

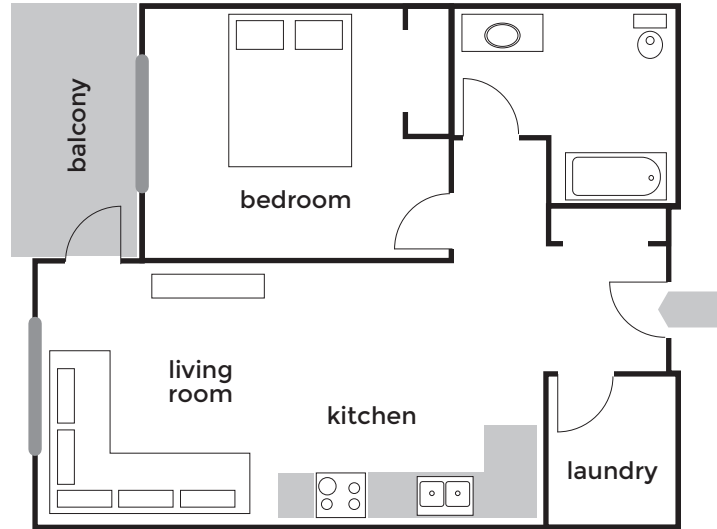
Unit type I:
617.44 ft²

1 Bedroom
1 Bathroom

Monthly Rent

\$1,450⁰⁰

utilities extra



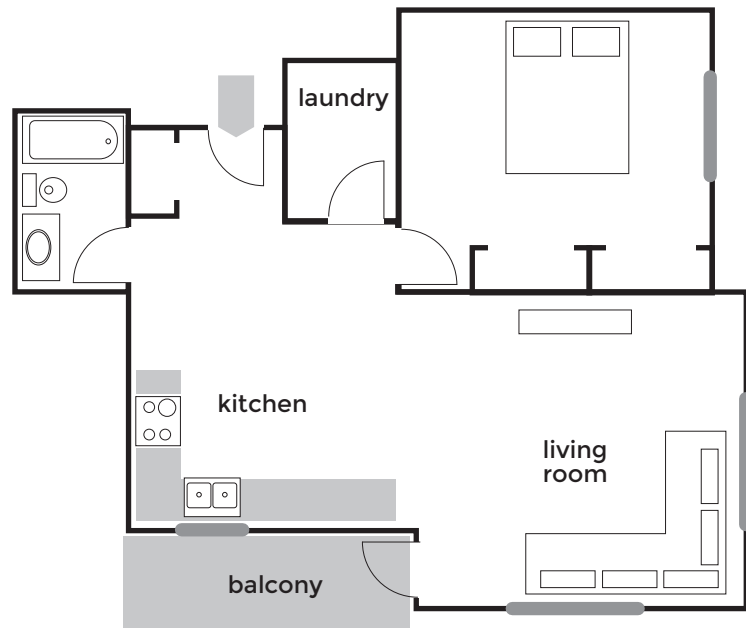
Unit type J:
1083 ft²

1 Bedroom
1 Bathroom

Monthly Rent

\$2,155⁰⁰

utilities extra



Tel: (902) 892-8508

www.bevanenterprises.com

Plans and prices

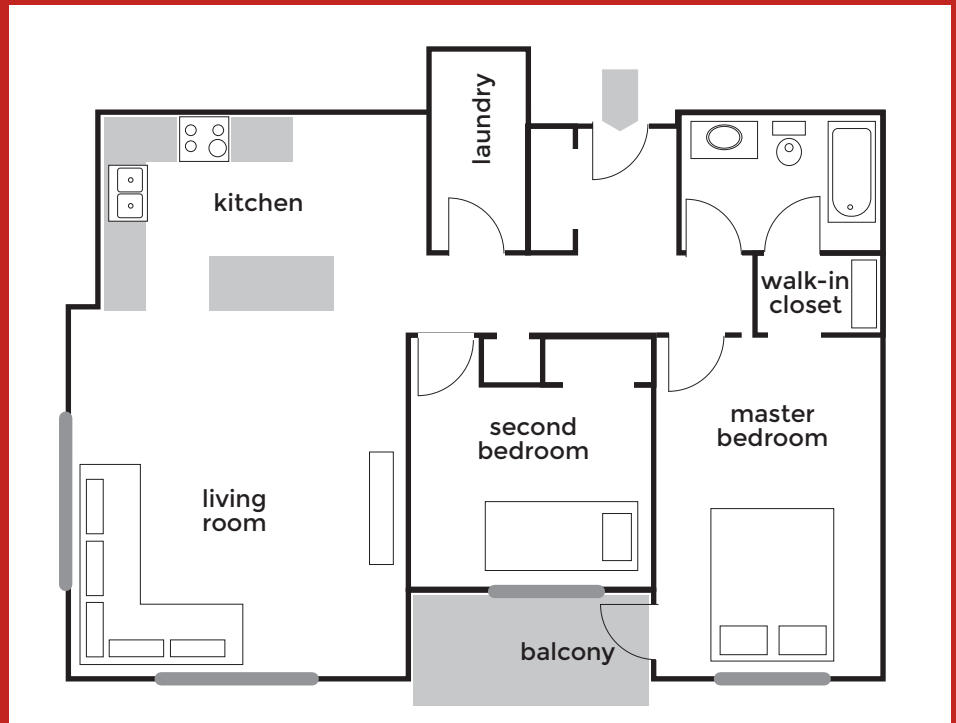
Unit type K:
1222.72 ft²

2 Bedrooms
1 Bathroom

Monthly Rent

\$2,400⁰⁰

utilities extra



**Underground parking and
extra storage space available by request**



Tel: (902) 892-8508

www.bevanenterprises.com

**READY TO MAKE 11 PINE DRIVE
YOUR NEW HOME?**



Now Accepting applications!

*Contact us today to schedule a viewing or
to learn more about leasing opportunities.*

Email: Apartments@bevanenterprises.com

Tel: (902) 892-8508

www.bevanenterprises.com

You're in the right place...



Tel: (902) 892-8508

www.bevanenterprises.com