



# 11 PINE DRIVE, CHARLOTTETOWN, PE C1A 6R6

1 & 2 Bedroom suites –  
Designed for Convenience  
and Ease



Tel: [\(902\) 892-8508](tel:(902)892-8508)

[www.bevanenterprises.com](http://www.bevanenterprises.com)

# About Us

Bevan Enterprises provides quality apartment rentals across Charlottetown, Stratford, and Cornwall, PEI. Our dedicated team of full-time staff ensures well-maintained properties and offers 24-hour emergency service for tenant support.

We offer a variety of rental options, from charming heritage apartments with high ceilings and hardwood floors to modern, contemporary units. For those seeking convenience, our furnished bachelor and 2-bedroom apartments in downtown Charlottetown come fully equipped with essential utilities, cable TV, and more. At Bevan Enterprises, we are dedicated to creating comfortable, worry-free living environments for all our tenants.

## Brief Overview: 11 Pine Drive

Welcome to 11 Pine Drive, a premium apartment residence located in the heart of Charlottetown.

Designed with senior living in mind, this premium residence offers thoughtfully crafted 1-bedroom and 2-bedroom Suites, making everyday life easy and enjoyable.

Each suite boasts spacious layouts with in-suite laundry, modern kitchens, and private balconies with stunning views. With a focus on accessibility, 11 Pine Drive provides wide doorways, low thresholds, and senior-friendly features throughout. The building includes luxurious amenities such as a fully equipped fitness center, secure underground parking, and advanced security systems, ensuring a comfortable and secure environment for all residents.

Ideally located close to healthcare facilities, shopping, and recreation, 11 Pine Drive is perfect for seniors looking to stay connected to the community while enjoying a relaxed and worry-free lifestyle.

Expected to be ready by Fall 2025!



Tel: [\(902\) 892-8508](tel:(902)892-8508)

[www.bevanenterprises.com](http://www.bevanenterprises.com)

# Key Selling Points: 11 Pine Drive Apartments

- Senior-Friendly Design: Spacious layouts with wide doorways and low thresholds for easy accessibility.
- Modern Amenities: In-suite laundry, private balconies, and high-quality finishes in every unit.
- Fitness & Wellness: On-site fitness center for maintaining an active lifestyle.
- Community Atmosphere: Welcoming common areas encouraging social interaction.
- Security: 24/7 security and secure underground parking for peace of mind.
- Prime Location: Close to medical facilities, shopping, and recreational areas.

## Building Overview:

- Total Units: **41 apartments**
- Types of Apartments: **1-bedroom and 2-bedroom Suits**
- Stories: Multi-story building including **12 different unit layouts.**
- Special Features:
  - **Elevator for easy access to all floors**
  - **Fitness center for resident use**
  - **Secure underground parking**
- Accessibility:
  - **Senior-friendly** design with wide doorways and low thresholds
  - Handrails in common areas for added safety



## Common Areas

Fitness Center:

- Equipped with a variety of machines for cardio and strength training, including treadmills, stationary bikes, and weight stations.

## Community Room or Lounge Spaces:

- Advanced keycard or keypad access system for secure entry to the building and common areas.
- Dedicated mail and package room for safe and organized deliveries.

## Private Balconies

- Each unit features a private balcony, offering a personal outdoor retreat with views of the surrounding area.

## Parking and Storage

- Information about the underground parking (availability, security)
- Extra storage units available for residents

## Amenities

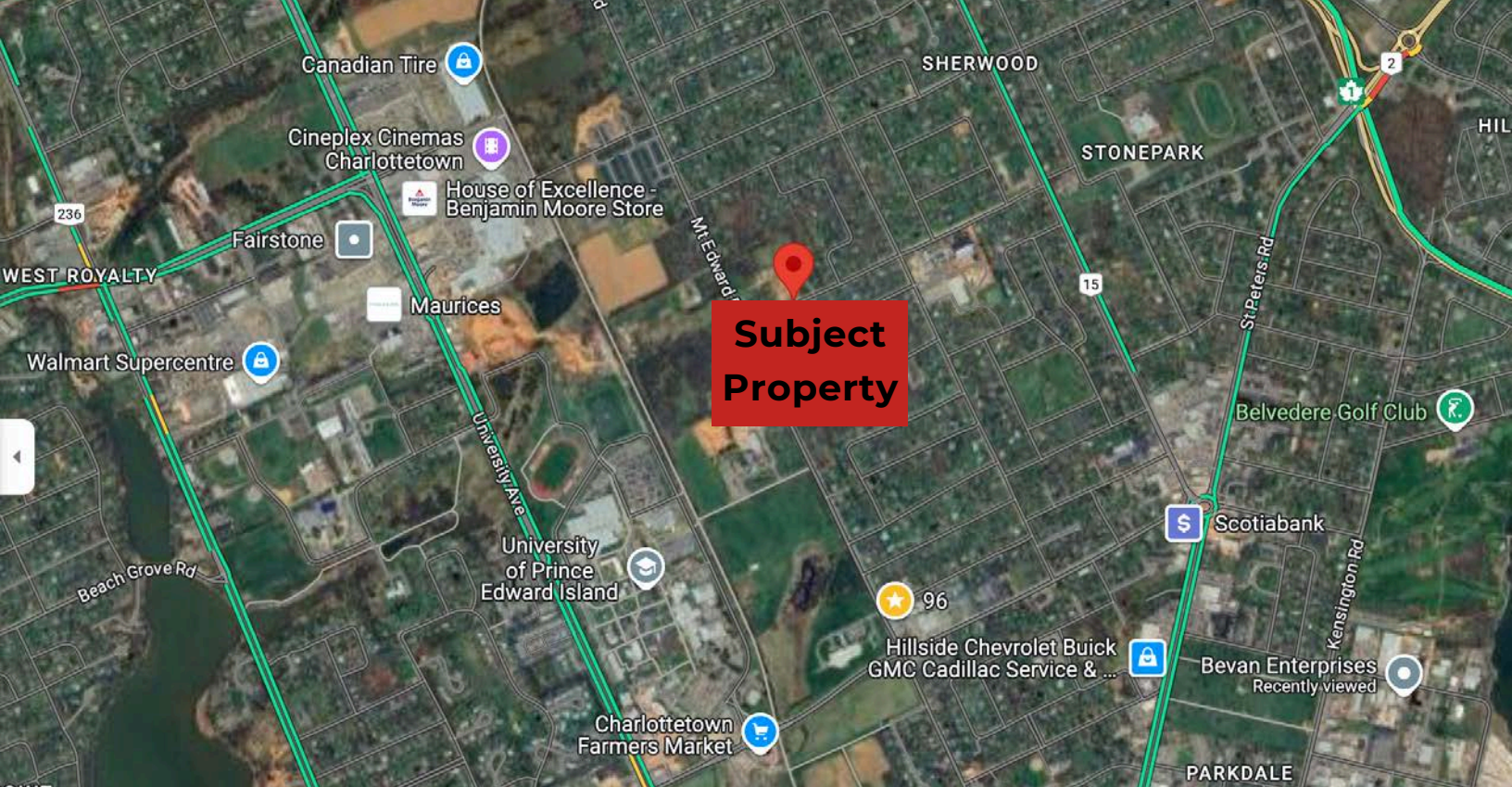
- In-suite laundry facilities
- Modern kitchens with updated appliances Energy-efficient windows and heating/cooling systems Wi-Fi and cable-ready setups

## Security Features

- 24/7 security cameras
- Secure entry systems (key cards, video entry)
- Fire safety and sprinkler systems

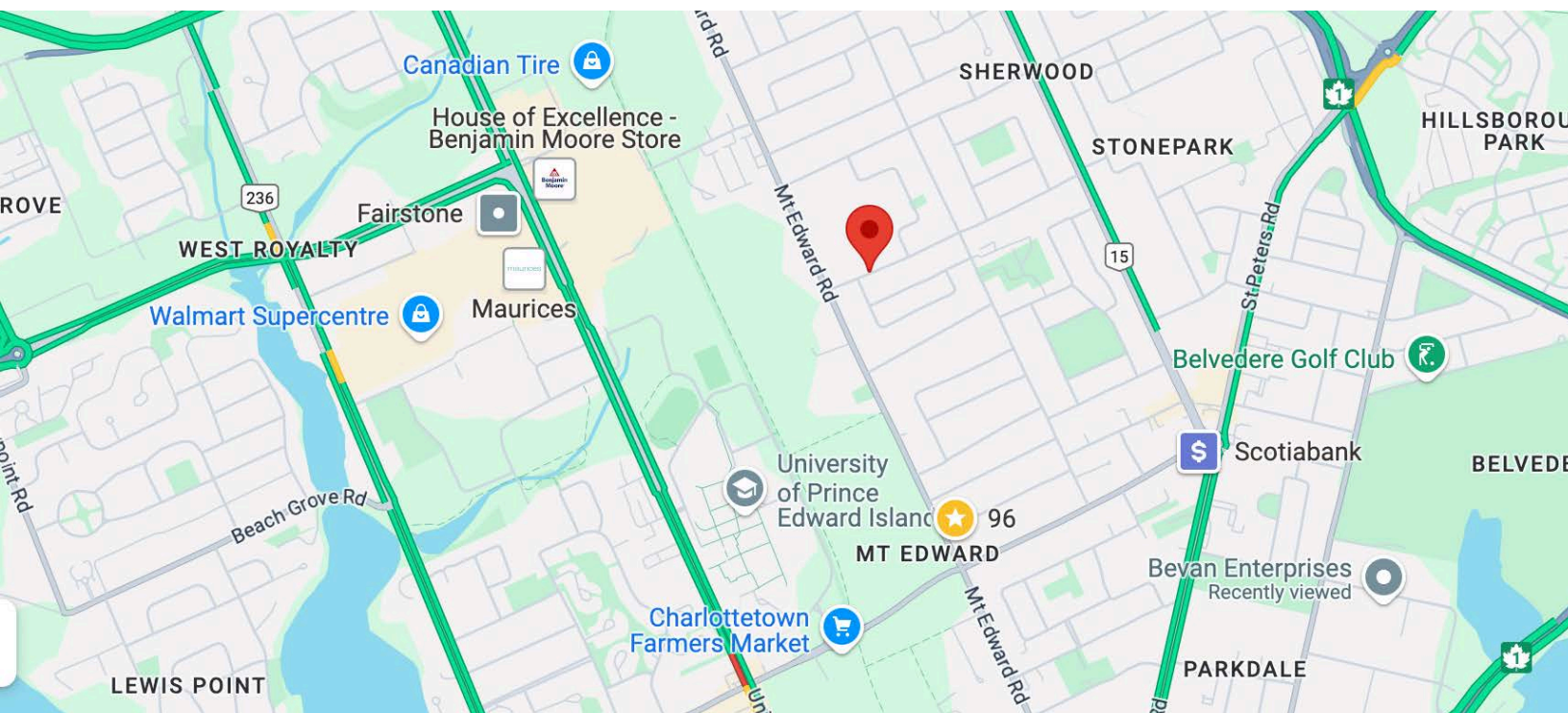






# Prime Location

Located in a quiet Charlottetown neighborhood, 11 Pine Drive offers peaceful living with convenient access to shopping, healthcare, and recreational areas. Essential services are just minutes away, making it an ideal place to call home.



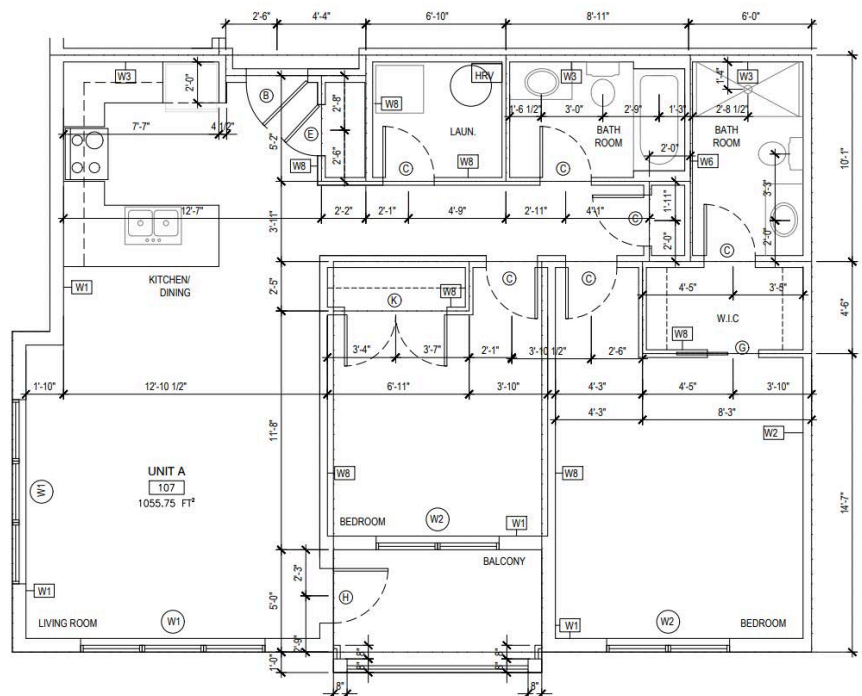


We offer **12 unique suite layouts** to suit a variety of lifestyles. Whether you're looking for a cozy 1-bedroom or a spacious 2-bedroom suite, there's a layout designed for you

**Unit type A: 1055.75 ft<sup>2</sup>**



**2 Bed rooms**  
**2 Bathrooms**



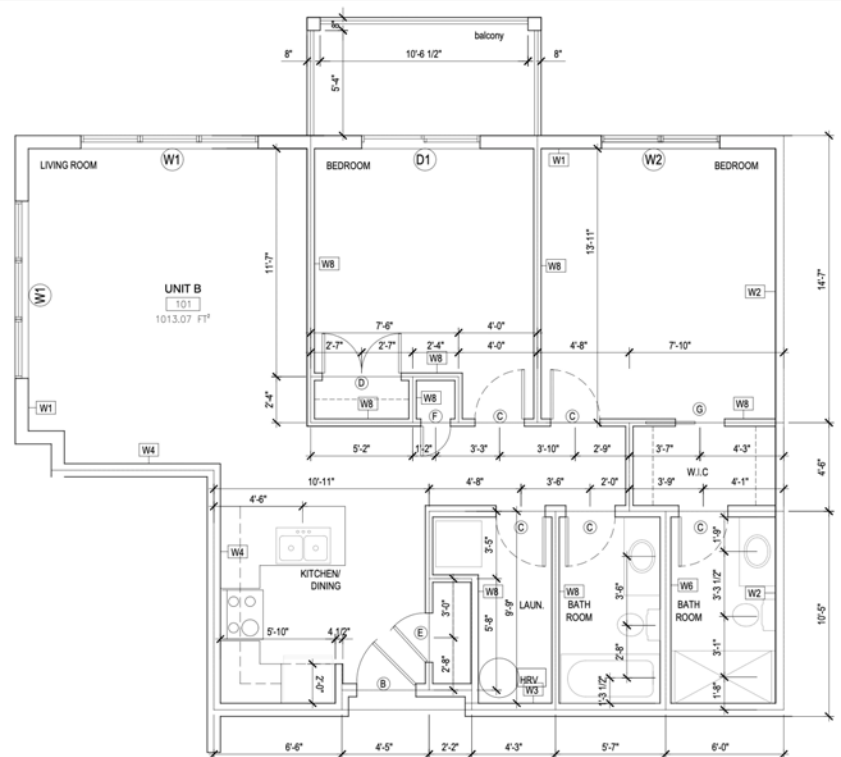
Tel: [\(902\) 892-8508](tel:(902)892-8508)

[www.bevanenterprises.com](http://www.bevanenterprises.com)

# Unit type B: 1013.07 ft<sup>2</sup>



**2 Bed rooms**  
**2 Bathrooms**



UNIT 'B' LAYOUT  
SCALE: 1/4"=1'-0"



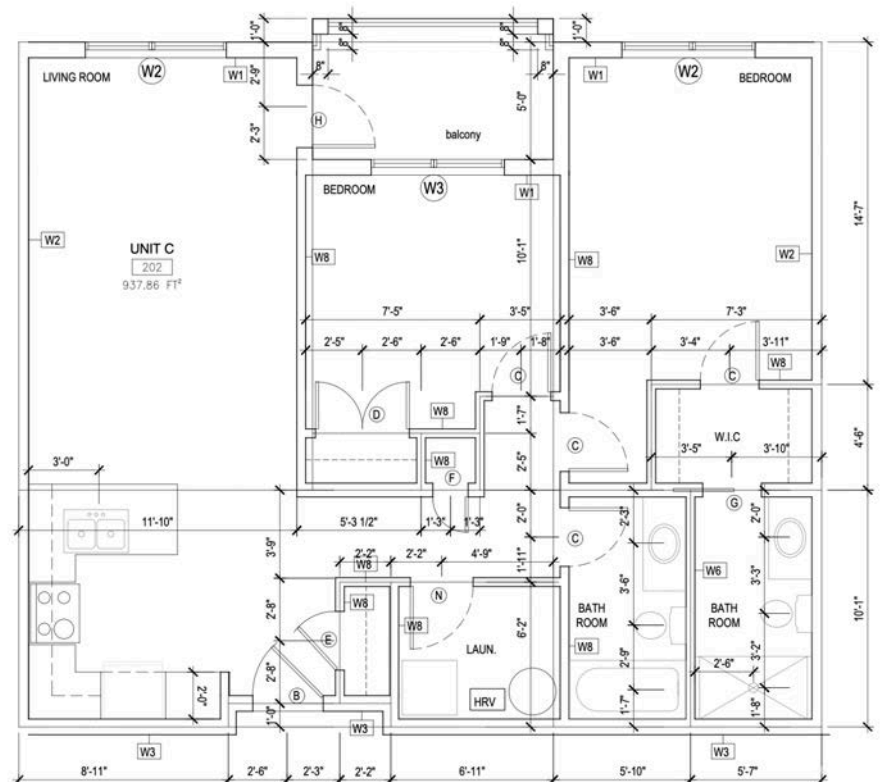
Tel: (902) 892-8508

[www.bevanenterprises.com](http://www.bevanenterprises.com)

Unit type C: 937.86 ft<sup>2</sup>



2 Bed rooms  
2 Bathrooms



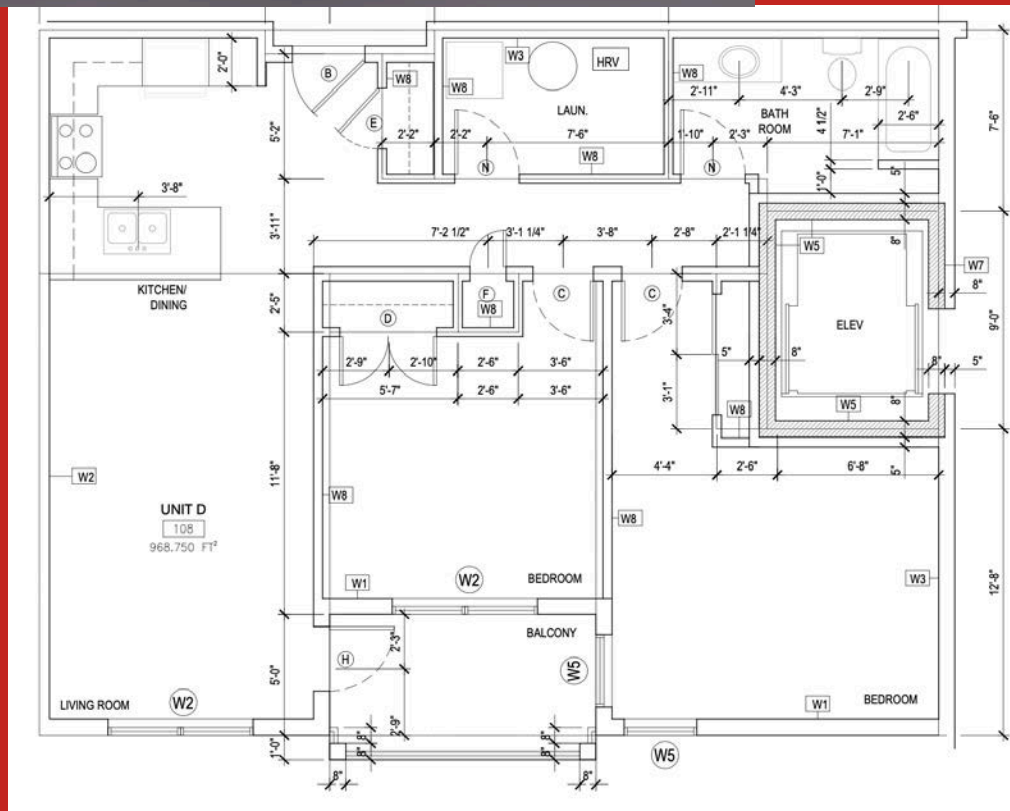
Tel: (902) 892-8508

[www.bevanenterprises.com](http://www.bevanenterprises.com)



Unit type D: 968.75 ft<sup>2</sup>

2 Bed rooms  
1 Bathroom



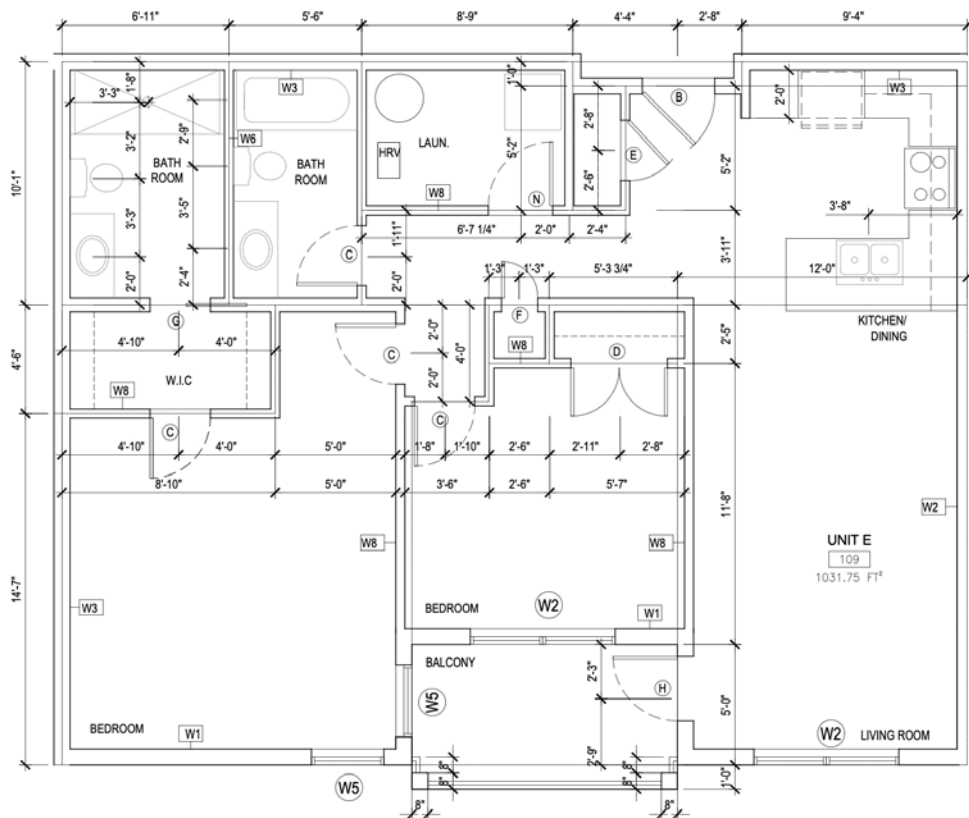
Tel: (902) 892-8508

[www.bevanenterprises.com](http://www.bevanenterprises.com)

Unit type E: 1055.75 ft<sup>2</sup>



2 Bed rooms  
2 Bathrooms



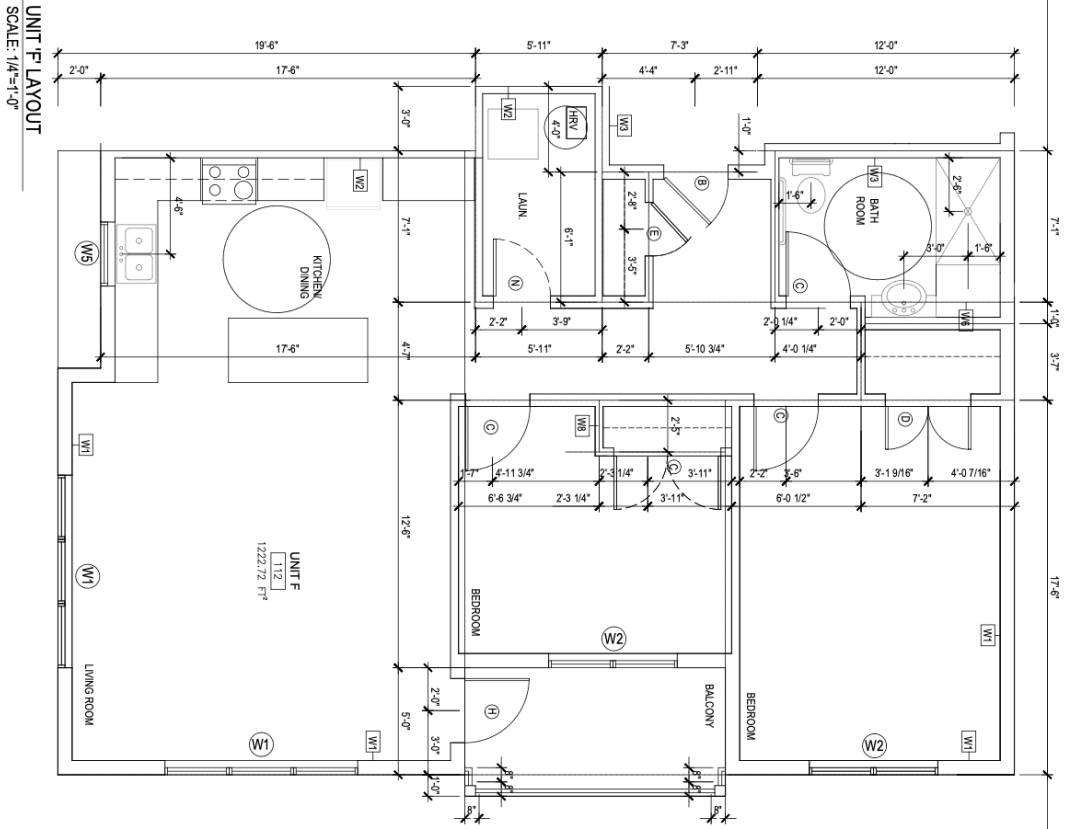
Tel: (902) 892-8508

[www.bevanenterprises.com](http://www.bevanenterprises.com)

Unit type F: 1222.72 ft<sup>2</sup>



2 Bed rooms  
2 Bathrooms

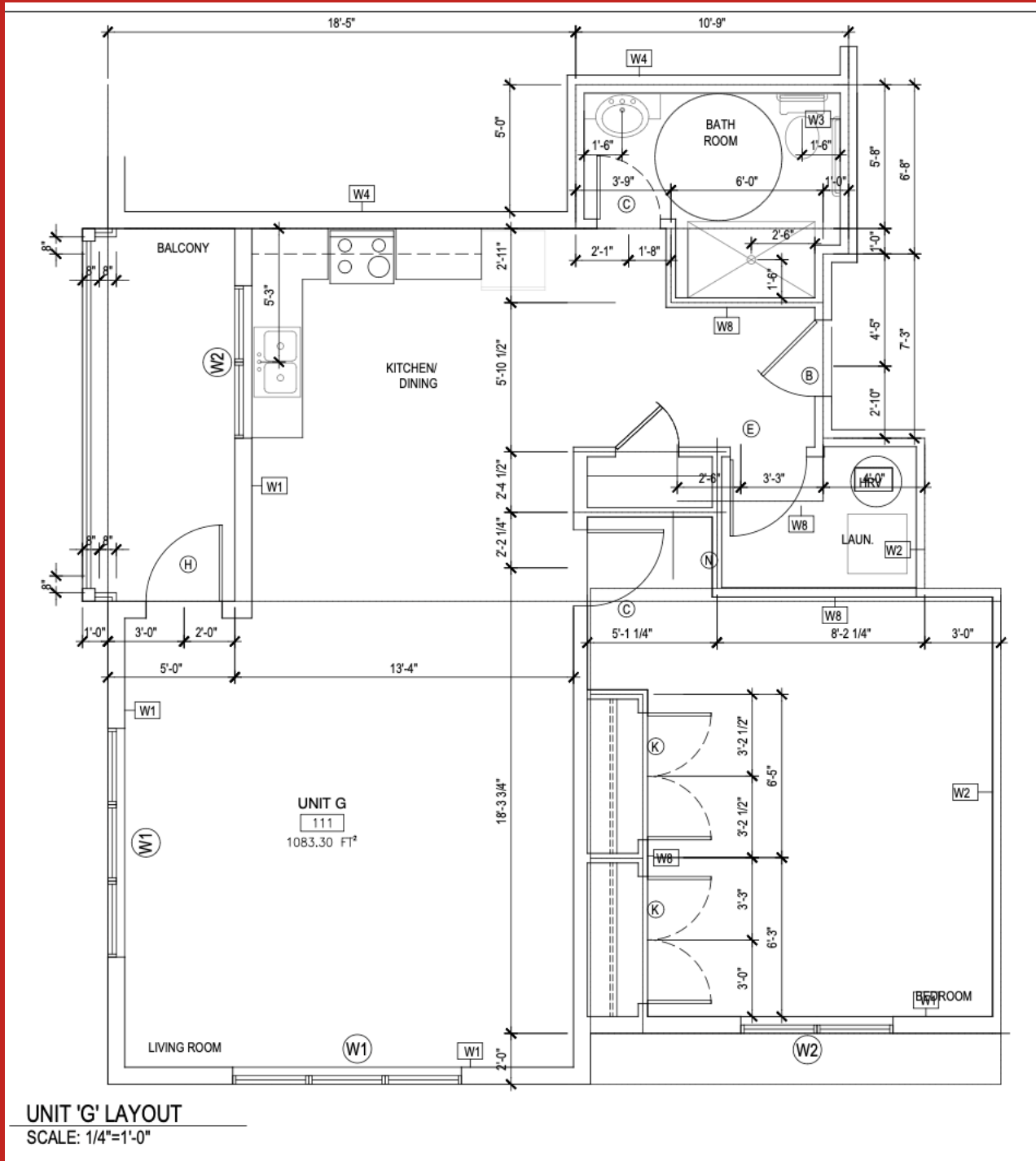


Tel: (902) 892-8508

www.bevanenterprises.com



Unit type G: 1083.30 ft<sup>2</sup>



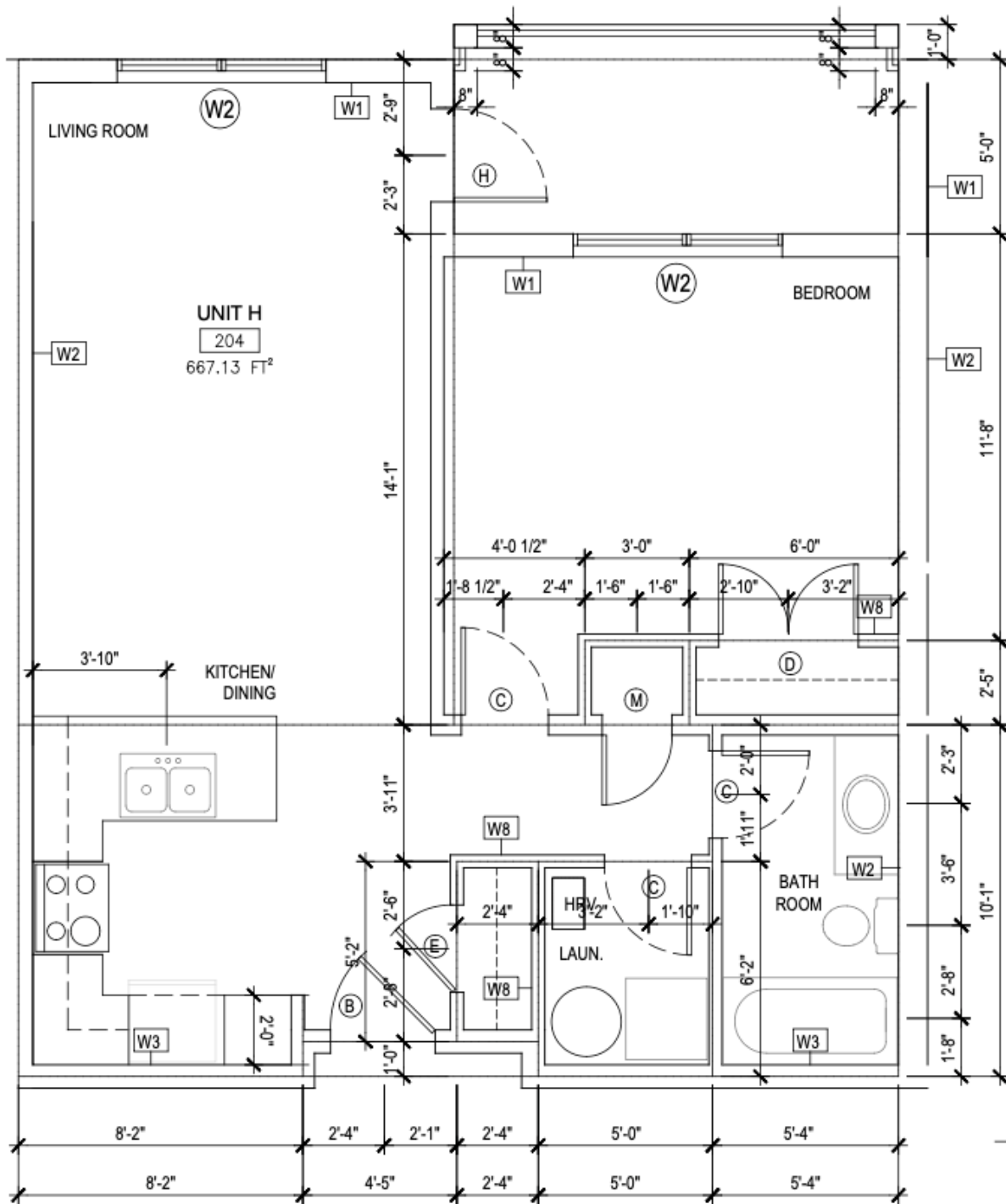
**1 Bed room**  
**1 Bathroom**



Tel: (902) 892-8508

[www.bevanenterprises.com](http://www.bevanenterprises.com)

# Unit type H: 667.13 ft<sup>2</sup>



**1 Bed room**  
**1 Bathroom**



Tel: (902) 892-8508

[www.bevanenterprises.com](http://www.bevanenterprises.com)

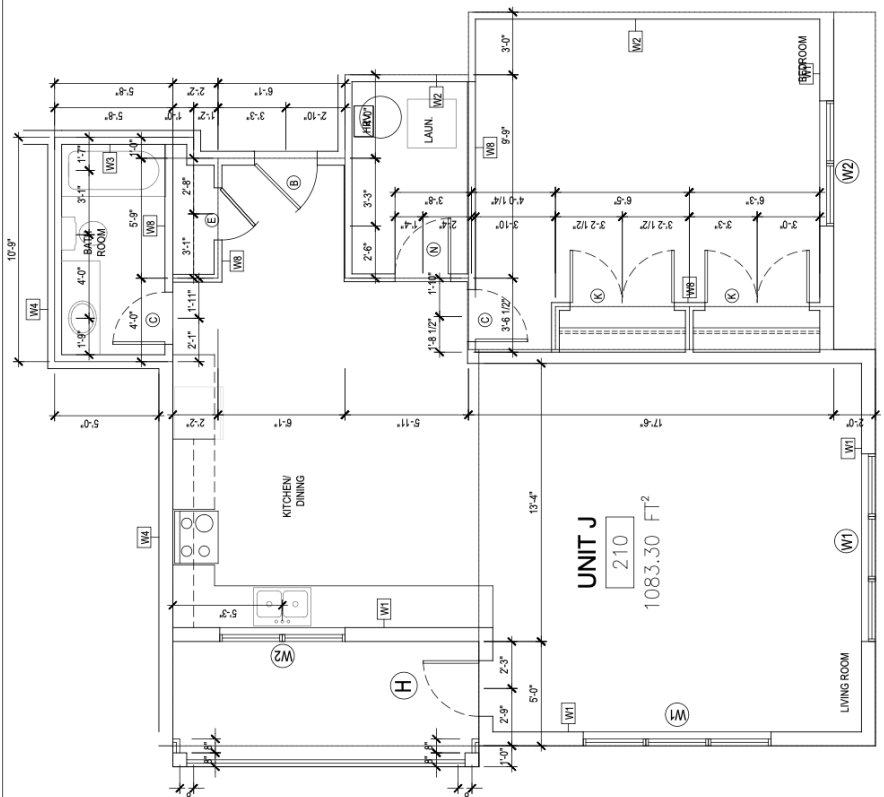




# Unit type J:1083.30t<sup>2</sup>



**1 Bed room**  
**1 Bathroom**



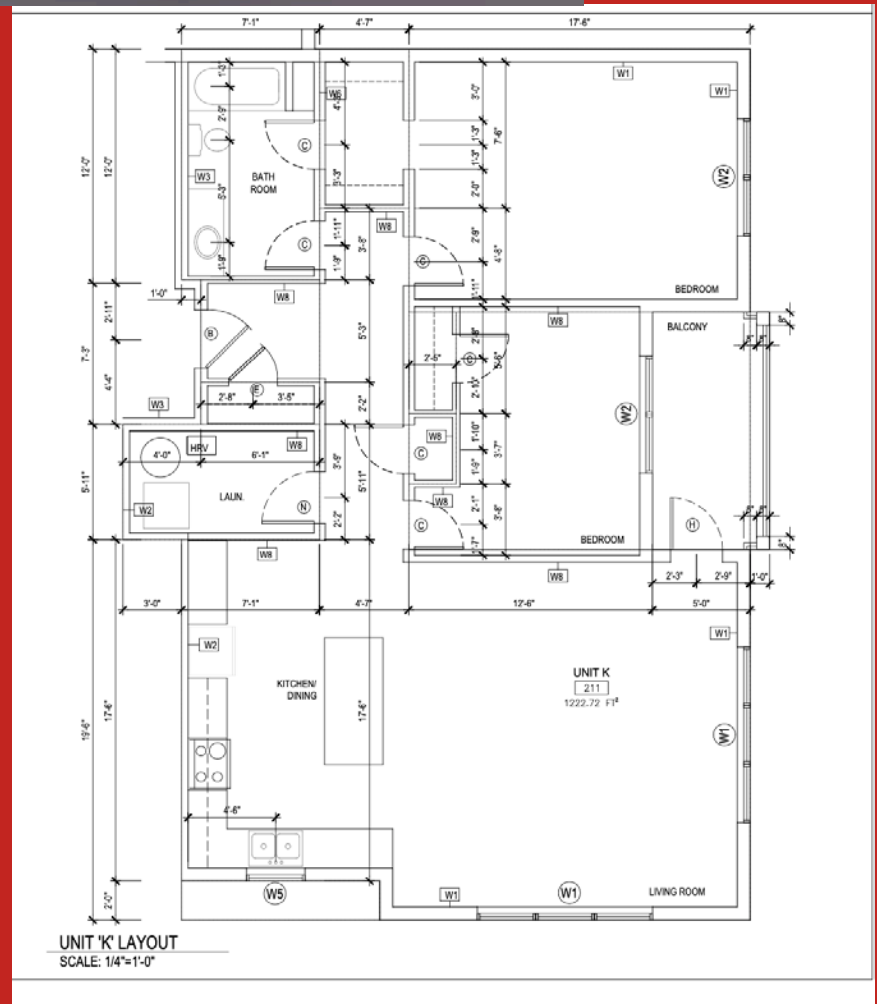
Tel: (902) 892-8508

[www.bevanenterprises.com](http://www.bevanenterprises.com)

# Unit type K: 1222.72 ft<sup>2</sup>



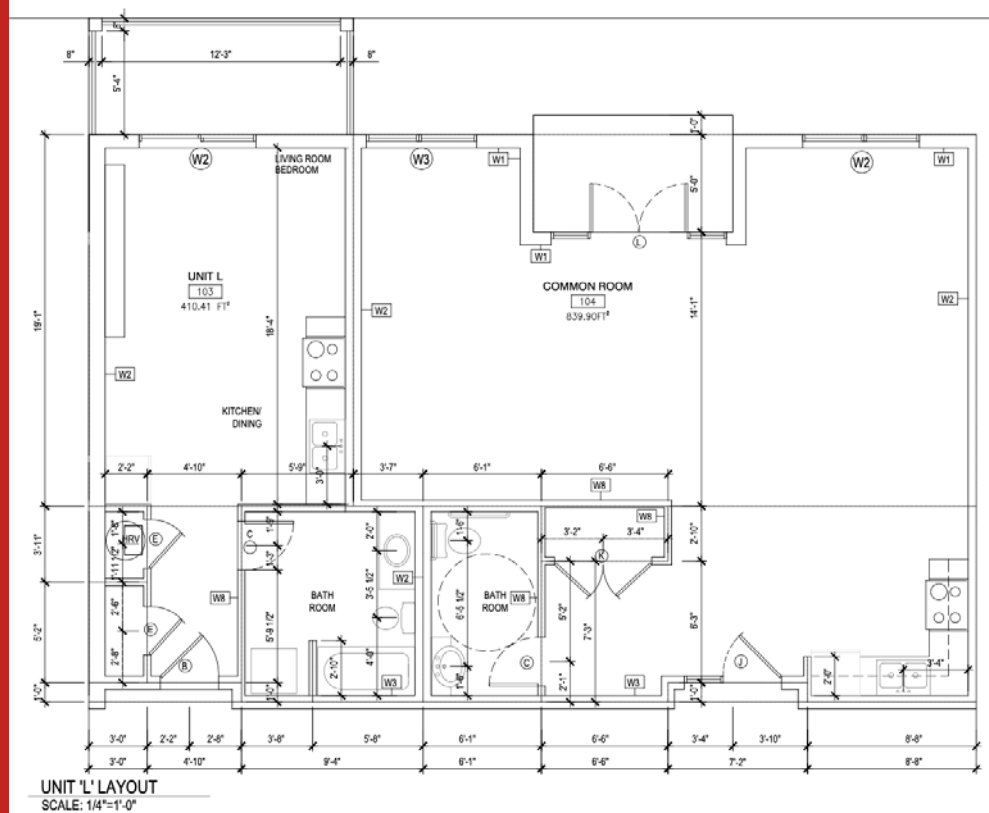
**2 Bed room**  
**1 Bathroom**



Unit type L: 839.90 ft<sup>2</sup>



1 Bed room  
1 Bathroom



Tel: (902) 892-8508

[www.bevanenterprises.com](http://www.bevanenterprises.com)



**Ready to make 11 Pine Drive your new home?  
Now Accepting applications!!!  
Contact us today to schedule a viewing or to  
learn more about leasing opportunities!**

**[www.bevanenterprises.com](http://www.bevanenterprises.com)**

**Tel: (902) 892-8508**

**Email:**

**[Apartments@bevanenterprises.com](mailto:Apartments@bevanenterprises.com)**

**You're in the right place...**



**Tel: [\(902\) 892-8508](tel:(902)892-8508)**

**[www.bevanenterprises.com](http://www.bevanenterprises.com)**